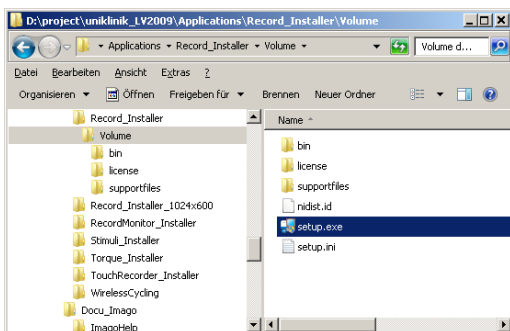


## Installation Guide

**Please note that the screenshots have been made with IMAGO Record. The other programs look similar. Special installations necessary for IMAGO Record and STIMULI are shown in chapter Driver Installation**

### Program Installation

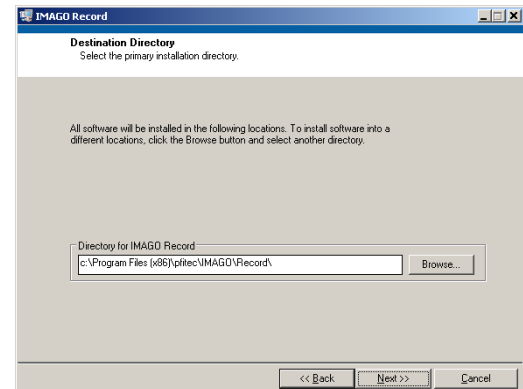
**1. The downloaded version consists of a zip file to make sure your spam filter does not prevent sending the file to you. Please unpack the zip file with WinZip or any other program. After unzipping the content looks like:**



**2. Double click the setup.exe in the sub-directory Volume. The setup starts.**

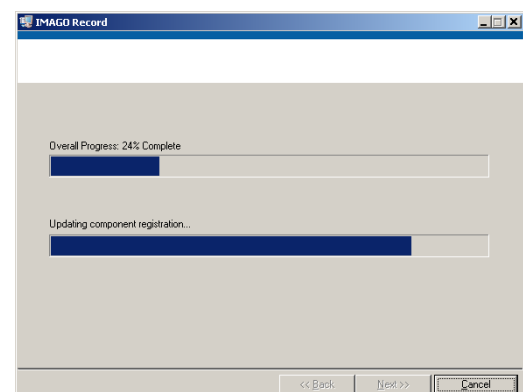


**3. Press Next to continue.**



**4. Choose the path where the program will be installed. It is recommended not to change the default path. Press Next.**

**5. The next window shows an overview of the components which will be installed. Press Next.**



**6. Now the installation is done. Press Finish at the end.**

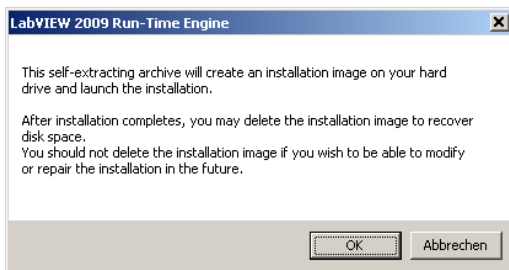
## Runtime Library Installation

To run the program, you need to install the Runtime Library so that the program finds the necessary components. Since the Runtime Library is too big to include in all installation programs, the installation of the Runtime Library needs to be done separately. The provided library can be used for 32Bit and 64Bit Windows systems.

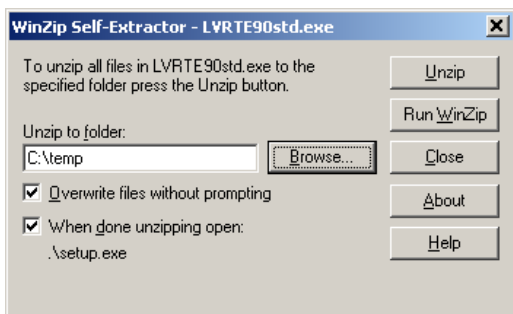
1. Download the Runtime Library. Use the link:

<http://pfitec.de/Download/tools/LVRTE90std.zip>

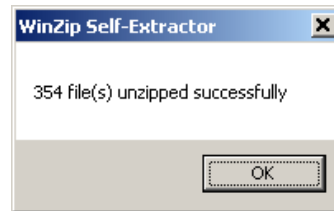
2. Unzip the file with WinZip or any other zip program. Double click the application LVRTE90std.exe



3. Press OK



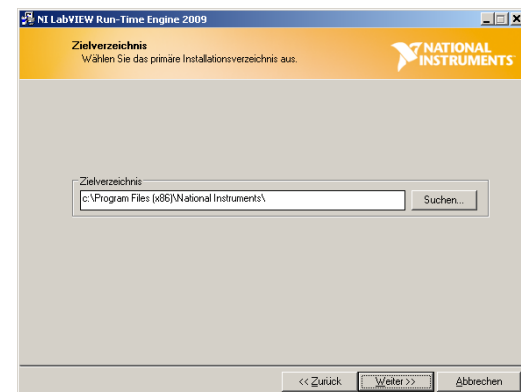
4. Select a directory and press Unzip to start extracting the files.



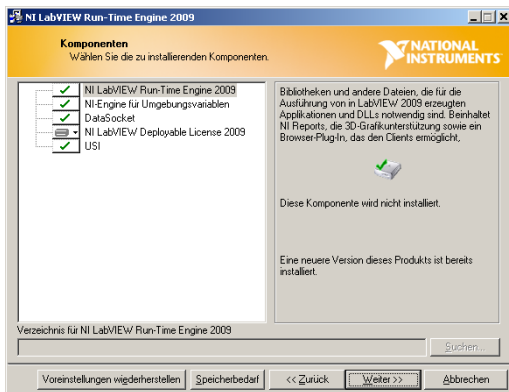
5. Press OK, the installation starts automatically.



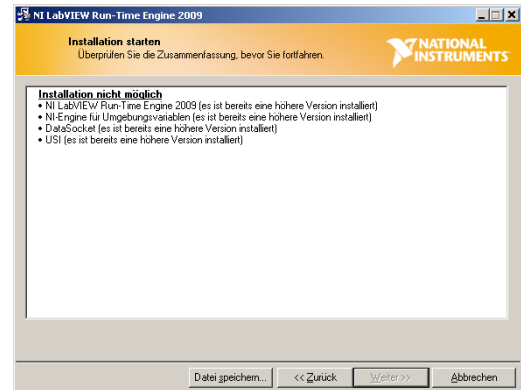
6. Press Next to start the installation



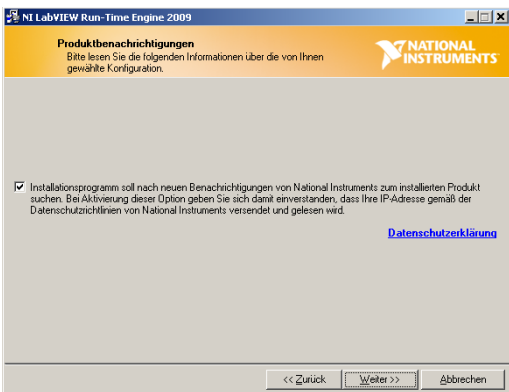
7. Select the path for the library installation. It is recommended to use the default path.



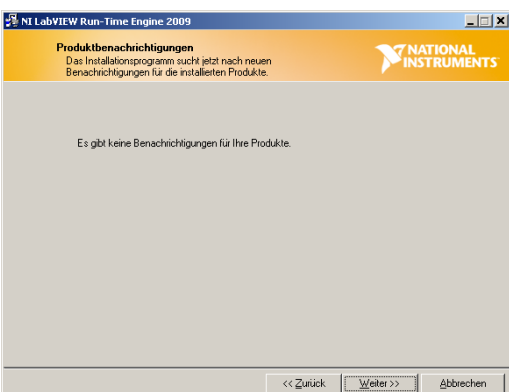
**8. Please use the default settings and press Next.**



**11. An overview about the installation. Press Next to start the installation.**



**9. Before the initialization the installation checks the NI homepage to find out if updates are available. Press Next.**

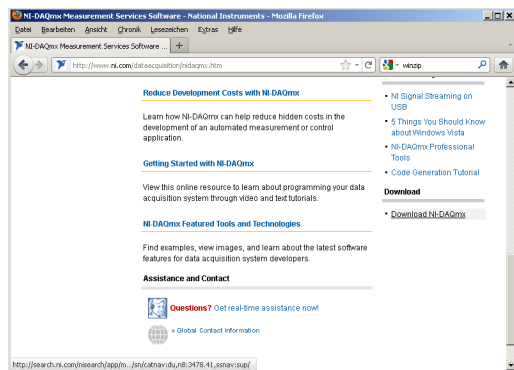


**10. No new updates are available, otherwise they would be installed automatically now. Press Next.**

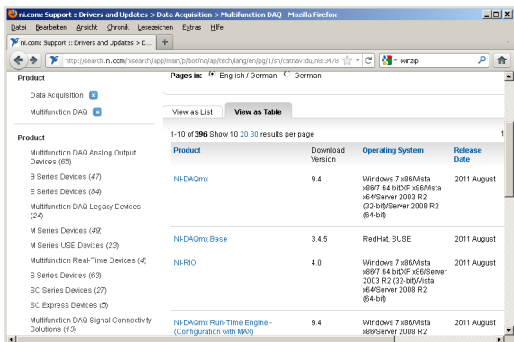
## Driver Installation

For programs using signal inputs from A/D converters, the DAQ-mx driver from National Instruments is necessary along with the hardware. The driver installation is necessary for IMAGO Record, STIMULI and TouchRecorder.

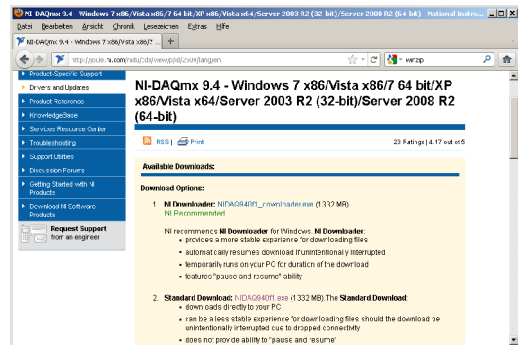
1. Get the latest version of DAQ-mx driver. Use the link:  
<http://www.ni.com/dataacquisition/nidaqmx.htm>



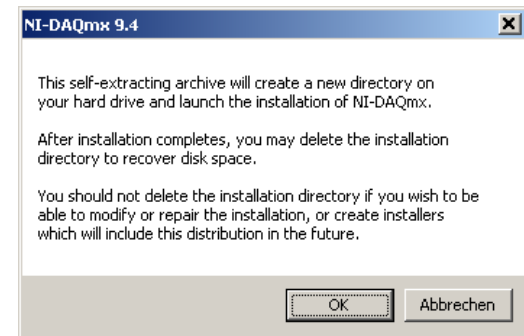
2. Press Download NI-DAQmx link on bottom of the page.



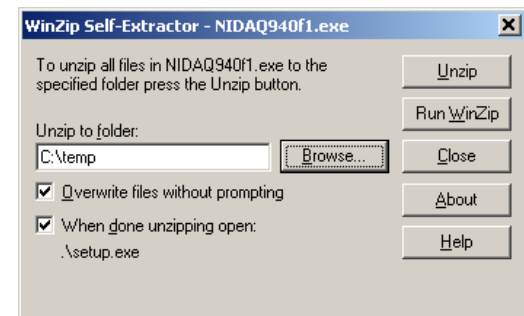
3. Press NI-DAQmx



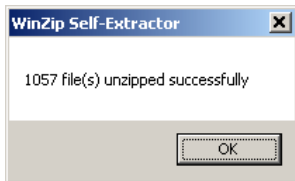
4. Since the program has a quite impressive file size, please use the NI Downloader which can continue file transfer if the connection is lost.



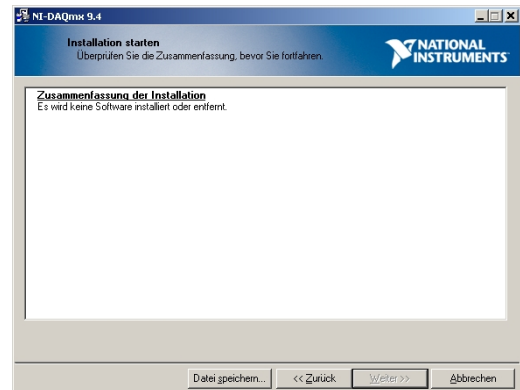
5. Press OK



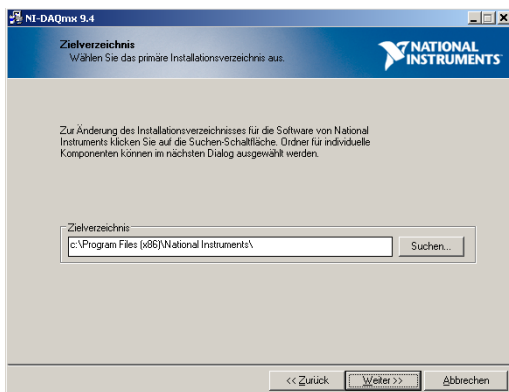
6. Select a directory and press Unzip to start extracting the files.



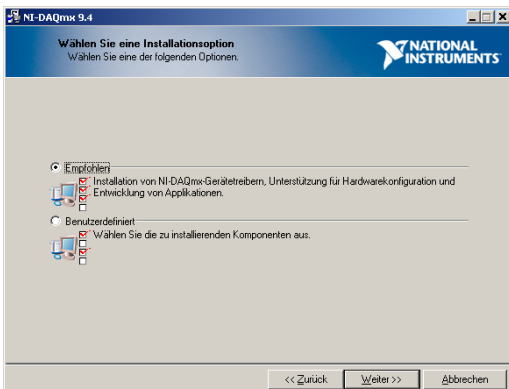
**7. Press OK, the installation starts automatically.**



**10. An overview is shown before the installation starts. The installation needs more than 30 minutes!**



**8. Select the path to install the drivers. It is recommended to use the default directory.**



**9. Select the installation options. Please use the default setting.**

## **First Start**

***If you start a program for the first time, the firewall will ask you if you want to allow or block access to some TCP ports. All pfttec programs are using TCP ports to distribute information between each other. So please allow the usage of TCP ports.***

***For IMAGO Record the recording parameters are requested. They are stored in a separate file besides the other settings since they define the measurement surrounding. You find more information about the requested entries in the online help.***

**Further information is available at:**

**pfitec • Florian Pfister  
Burgstr. 11a  
79346 Endingen  
Tel: (+49)7642-926620  
Mail: [info@pfitec.de](mailto:info@pfitec.de)**

**[www.pfitec.de](http://www.pfitec.de)**